

Active Arl1

Catalog Number: 26924

Gene Symbol: ARL1

Description: Anti-active Arl1 Mouse Monoclonal Antibody

Background: Arl1 (Arf-like 1) localizes to the Golgi complex, where it is believed to recruit effector proteins to the trans-Golgi network. Golgi-localized proteins golgin-97 and golgin-245 have been shown as Arl1 effectors. Additional Arl1 effectors include the GARP (Golgi-associated retrograde protein)/VFT (Vps53) vesicle-tethering complex and Arfaptin 2. In *Drosophila* zygotes, mutation of Arl1 is lethal.

Immunogen: Recombinant Arl1 protein (active form)

Tested applications: IP, IHC, IF

Recommended dilutions:

1 µg for 1~2 mg total cellular proteins for IP

1:50~100 dilutions for IHC and IF

Concentration: 1 mg/ml

Host: Mouse

Clonality: Monoclonal

Purity: Purified from ascites

Format: Liquid

Storage buffer:

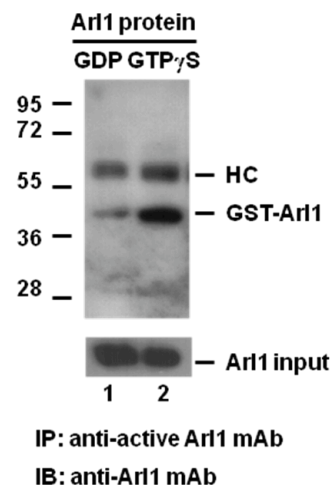
Preservative: no

Constituents: PBS (without Mg²⁺ and Ca²⁺), pH 7.4, 150 mM NaCl, 50% glycerol.

Species Reactivity: Arl1 antibody recognizes active Arl1-GTP from vertebrates.

Storage Conditions: Store at -20°C. Avoid freeze / thaw cycles.

Immunoprecipitation and Western blot:



Arl1 Activation Assay. Purified GST-tagged Arl1 proteins (Cat. #10136) were immunoprecipitated with the anti-active Arl1 monoclonal antibody (Cat. # 26924) after treated with GDP (lane 1) or GTP γ S (lane 2), and was blotted with anti- Arl1 monoclonal antibody (Cat. #26056). Arl1 protein input control is shown in the bottom panel.